



Table of contents

System requirements.....	3
Installation on a live server.....	4
How to create a new database in cPanel.....	5
How to upload files using cPanel.....	8
Installation on a local machine.....	14
Folders and file structure.....	15
Frequently asked questions.....	16
How to install updates / add-ons.....	19

System requirements

- Apache / IIS7+ / Lightspeed web server
- URL Rewrite support
- PHP 5+ / 7+
- The following PHP modules:
 - GD 2+ Library with FreeType
 - cURL with SSL support
 - JSON
- PHP Memory Limit 32Mb+ (more might be required to handle large images)
- MySQL 5+

Installation on a live server

1. Copy Files

- Unpack the archive you just downloaded from DevSaver.
- Copy all the files and subfolders from the “1. Template with CMS” folder to your website’s root directory (via FTP or using your hosting file manager).

Make sure to enable the “View hidden files” option in your FTP program.

2. MySQL Database

You must create a new database and assign/create a username for the connection. For more details on this topic refer to “[How to create a new database in cPanel](#)” chapter.

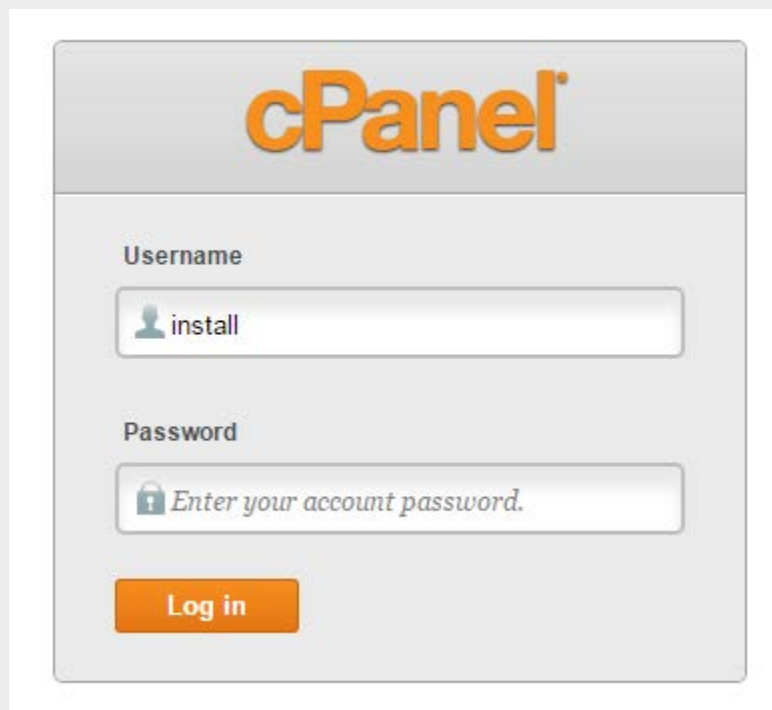
3. Launch Installer

- Open a new window in your preferred web browser.
- Simply type in your website address to launch the installer.

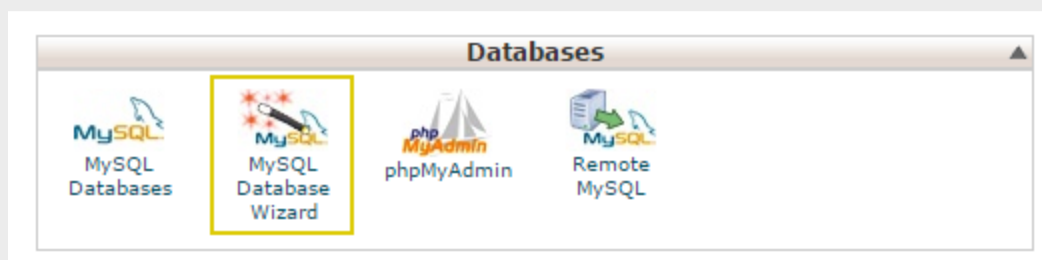
From this point forward, our automated installer will guide you till the finish line.

How to create a new database in cPanel

1. Log in into your cPanel account
(the most common URL is *www.example.com/cpanel*)




2. Click on the “MySQL Database Wizard” icon



3. Enter the name of your new database

MySQL® Database Wizard

 Video Tutorial

MySQL Databases allow you to store a large amount of information in an easy to access manner. The databases themselves are not easily read by humans. MySQL databases are required by many web applications including some bulletin boards, content management systems, and others. To use a database, you'll need to create it. Only MySQL Users (different than mail or other users) that have privileges to access a database can read from or write to that database.

Step 1: Create A Database

New Database: install_

4. Create the username and password for the connection

MySQL® Database Wizard

The system successfully added the database "install_demo".

Step 2: Create Database Users

Username: install_user ✓

NOTE: Usernames cannot contain more than seven characters.

Password: ✓

Reenter Password: ✓

Strength (Why?): Very Strong (100/100)

5. In the next window, check the “All Privileges” option to grant permissions to the created user

MySQL® Database Wizard

You successfully created a MySQL user named **"install_user"**.

Step 3: Add a User to the Database

User: **install_user**
Database: **install_demo**

<input checked="" type="checkbox"/> ALL PRIVILEGES	
<input checked="" type="checkbox"/> ALTER	<input checked="" type="checkbox"/> ALTER ROUTINE
<input checked="" type="checkbox"/> CREATE	<input checked="" type="checkbox"/> CREATE ROUTINE
<input checked="" type="checkbox"/> CREATE TEMPORARY TABLES	<input checked="" type="checkbox"/> CREATE VIEW
<input checked="" type="checkbox"/> DELETE	<input checked="" type="checkbox"/> DROP
<input checked="" type="checkbox"/> EVENT	<input checked="" type="checkbox"/> EXECUTE
<input checked="" type="checkbox"/> INDEX	<input checked="" type="checkbox"/> INSERT
<input checked="" type="checkbox"/> LOCK TABLES	<input checked="" type="checkbox"/> REFERENCES
<input checked="" type="checkbox"/> SELECT	<input checked="" type="checkbox"/> SHOW VIEW
<input checked="" type="checkbox"/> TRIGGER	<input checked="" type="checkbox"/> UPDATE

Next Step

6. Click the “Next Step” button to complete the database creation process

How to upload files using cPanel

1. Login into your cPanel account
(the most common URL is *www.example.com/cpanel*)

The image shows the cPanel login interface. At the top, the 'cPanel' logo is displayed in orange. Below the logo, there are two input fields. The first is labeled 'Username' and contains the text 'install' next to a user icon. The second is labeled 'Password' and contains the placeholder text 'Enter your account password.' next to a lock icon. At the bottom of the form is an orange 'Log in' button.

cPanel

Username

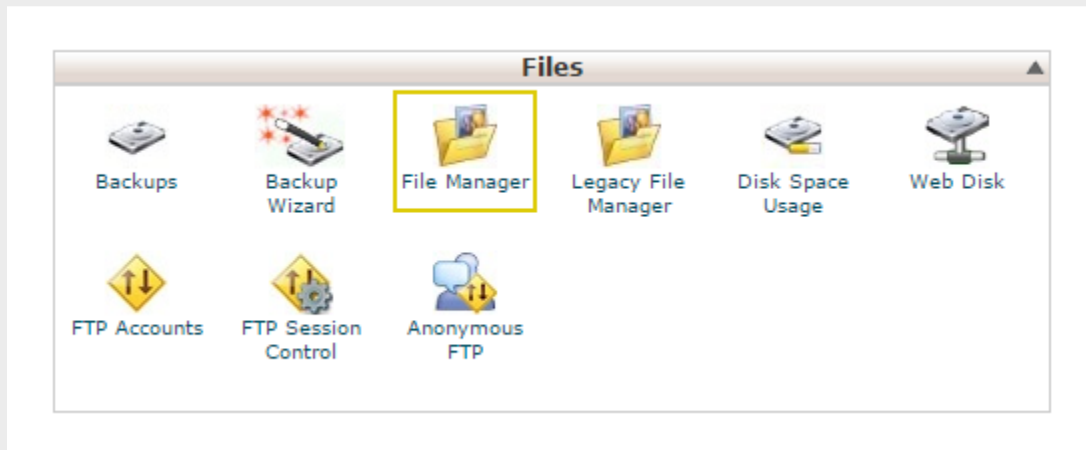
 install

Password

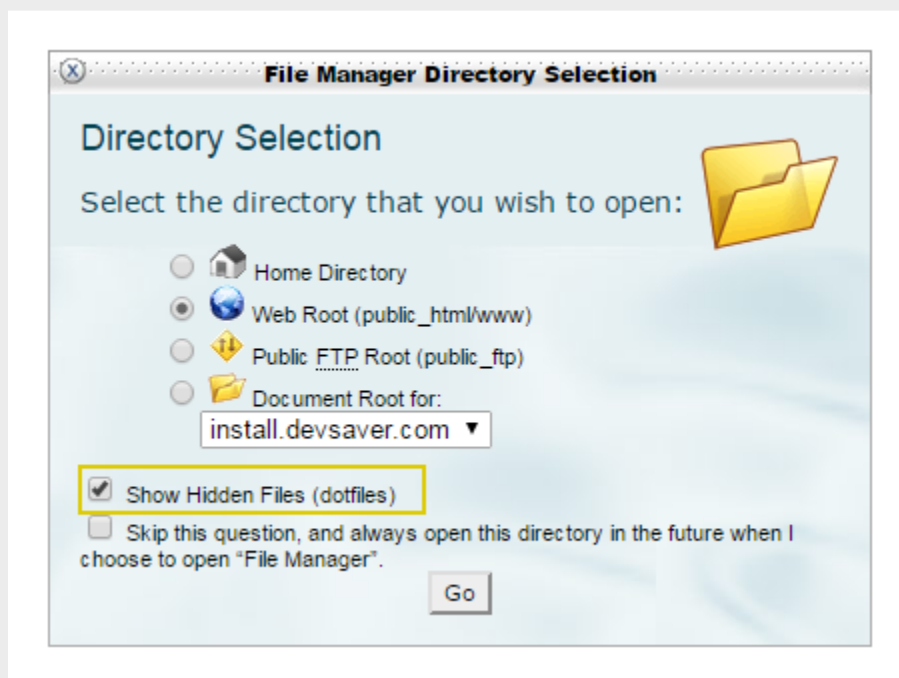
 Enter your account password.

Log in

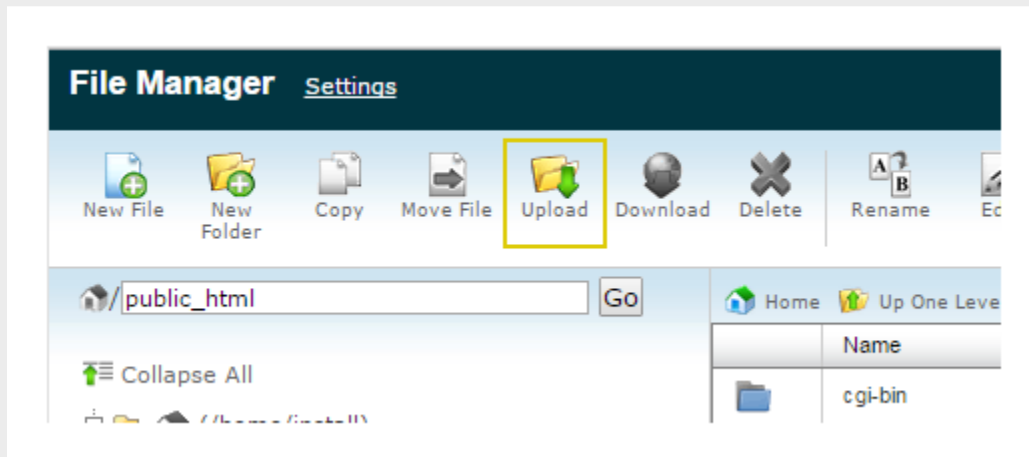
2. Click on the “File Manager” icon to launch the application



3. In the next pop-up window, make sure to check the “Show Hidden Files” option



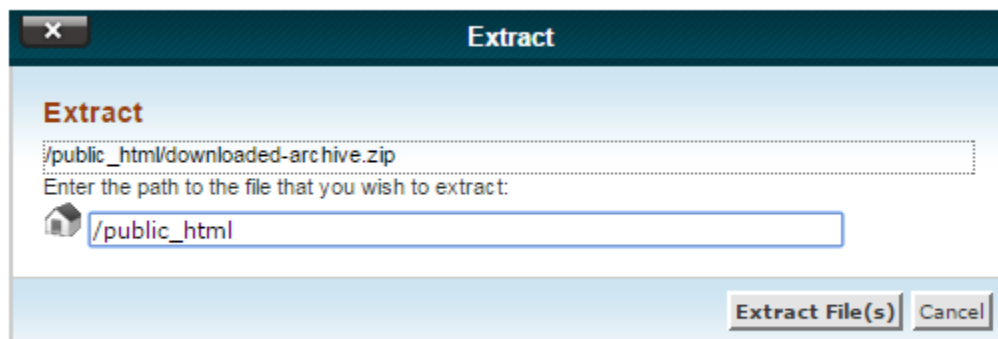
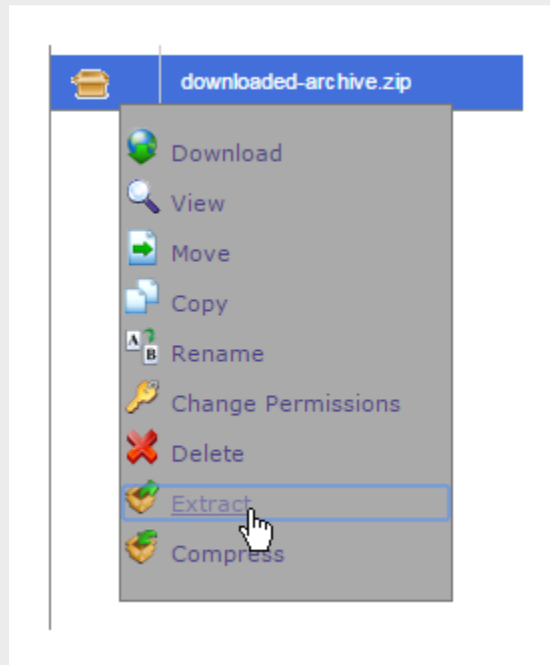
4. Click on the “Upload” icon in the “File Manager” navigation bar



5. Select the archive you just downloaded from DevSaver

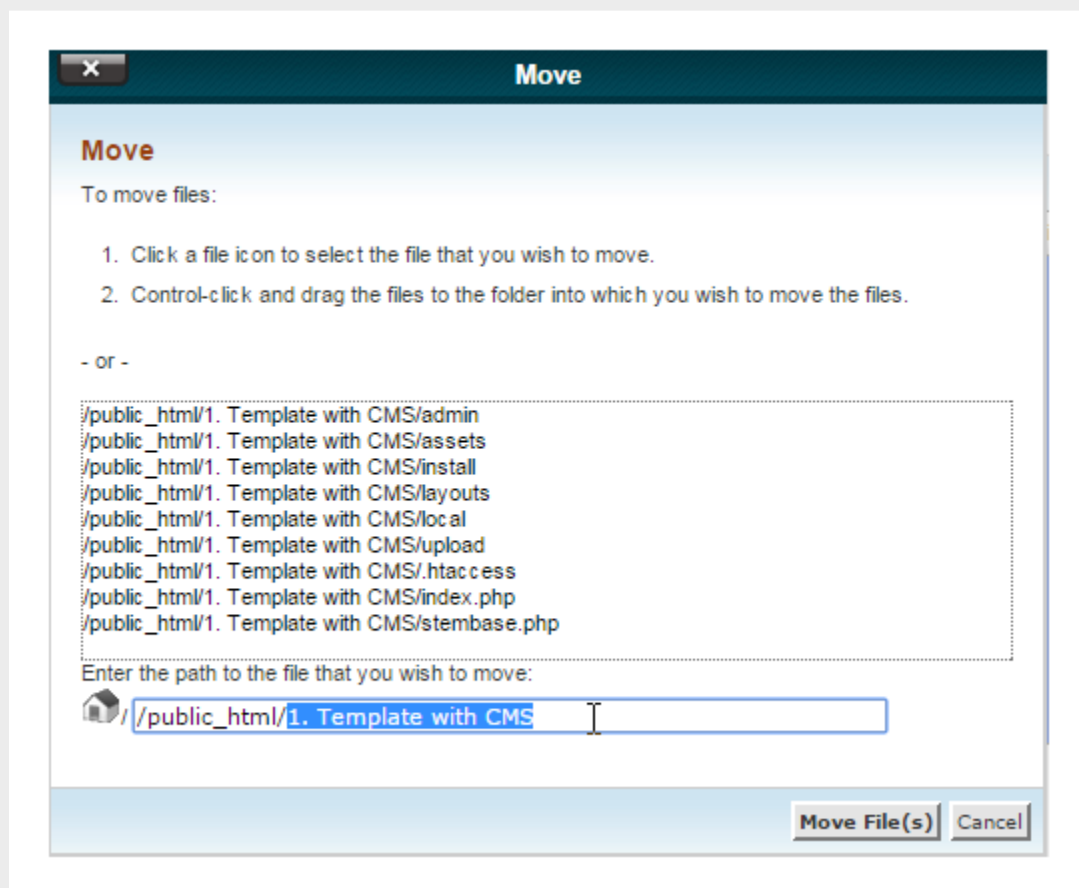


6. Select the “Extract” option in the contextual menu to unpack the archive to your website’s root directory

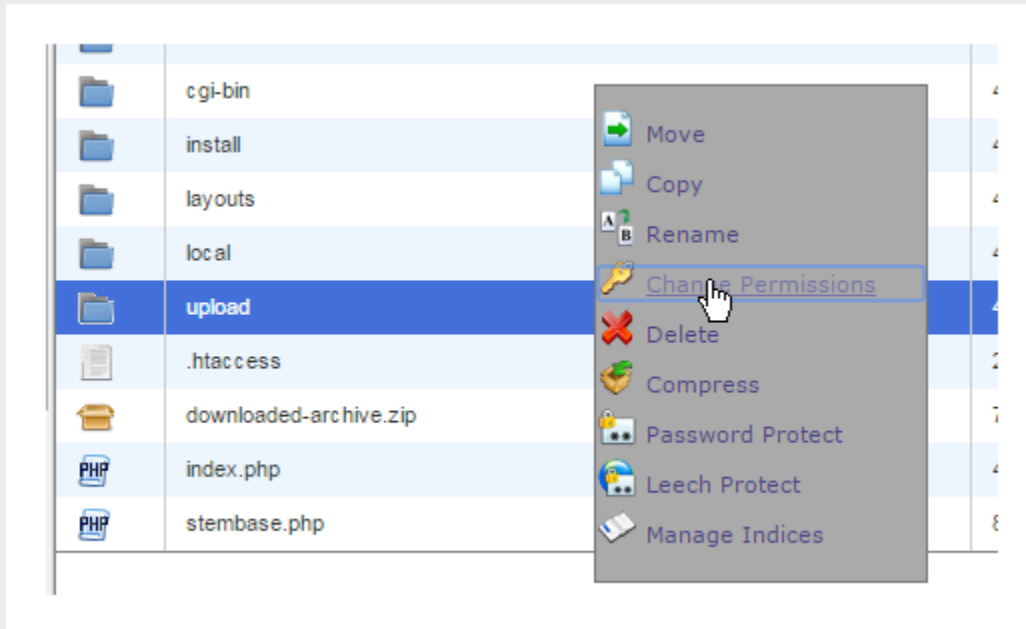


7. Double-click on the unpacked folder, “1. Template with CMS”, from the archive, select all its files and subfolders (including “.htaccess”) and click on the “Move” icon in the “File Manager” navigation bar.

Before clicking the “Move File(s)” button, delete the selected text (“1. Template with CMS”) from the destination path to move all the files to your website’s root directory (public_html).



8. Click the “Up One Level” button in the “File Manager” sub-navigation bar, right-click on the “upload” folder and select the “Change Permission” option in the contextual menu



9. Delete the following files and folders from your website's root directory (public_html):

- “1. Template with CMS” (empty folder)
- “2. Documentation”
- The archive you uploaded at step 5

Installation on a local machine

As a developer, you might want to install the website template on your own computer first and transfer the project to the client's live server later.

1. Install one of the following servers:

- WAMP <http://www.wampserver.com/>
- XAMPP <https://www.apachefriends.org/>

2. Copy Files

- Unpack the archive you just downloaded from DevSaver.
- Copy all the files and subfolders from the "1. Template with CMS" folder to the installation subfolder of your local server: "WAMP/www" or "XAMPP/htdocs".

3. Create a new MySQL database

- Open the following URL in a new window of your preferred web browser "<http://localhost/phpmyadmin>"

4. Launch Installer

Open the following URL in a new window of your preferred web browser "<http://localhost/>" or "[http://localhost/\[subfolder\]/](http://localhost/[subfolder]/)"

From this point forward, our automated installer will guide you till the finish line.

For more details on how to transfer a website from localhost to a live server refer to the "[Frequently asked questions](#)" chapter.

Folders and file structure

<code>assets/js</code>	All JavaScript files used for the front end. The files are loaded automatically by index.php in the following order: <ol style="list-style-type: none">1. files defined static in index.php2. plugin.*.js3. custom.*.js
<code>assets/css</code>	All CSS files used for the frontend. The files are loaded automatically by index.php in the following order: <ol style="list-style-type: none">1. font.*.css2. layout.*.css3. global.*.css4. plugin.*.css5. module.*.css6. widget.*.css7. custom.*.css
<code>assets/revslider</code>	revSlider – (Slider Revolution) where available
<code>assets/maintenance</code>	All assets for the coming soon / maintenance page
<code>upload/</code>	All client uploaded files using the admin panel
<code>upload/conf/database.php</code>	MySQL connection info
<code>layouts/share/layout.html</code>	Generic HTML layout for the entire website
<code>admin/assets/</code>	All assets (JavaScript, CSS, fonts, images etc.) used for the admin panel interface
<code>admin/lib/</code>	Framework files.
<code>admin/3rdparty/</code>	3rd party plugins or applications incorporated in the CMS (CKEditor, CKFinder, CodeMirror, SwiftMaileretc.)
<code>admin/modules/</code>	All installed modules in the CMS
<code>admin/modules/*/templates</code>	HTML templates used by that module
<code>admin/modules/*/site.php</code>	PHP code for that module to generate the frontend page(s)
<code>admin/modules/*/admin.php</code>	PHP code for that module to generate the admin pages in the CMS

Frequently asked questions

Q: How do I transfer the website from localhost to a live server?

A: Upload all the files to the hosting server. Make sure to enable the “View hidden files” option, otherwise some files like “.htaccess” will not be uploaded and the website will not benefit of any protection or friendly URLs.

Open the “upload/conf/database.php” file and put the MySQL login info for the live website.

Use phpMyAdmin to export the database from your local machine and import it to the live website.

Q: How do I move the website from a subfolder to the website’s root directory without causing broken images or links?

A: If you inserted images/files in the rich text editor using Resources Manager, you need to alter all their paths. You can do this by hand, going in each file and putting the correct path, or you can perform a mass search and replace over the entire database for “[subfolder]” with “/”.

Q: Why can’t I upload files larger than 2Mb?

A: By default, PHP is configured to accept files up to 2Mb. There is a “php.ini” file in the “admin/” folder that tries to increase this value, but it’s up to your hosting server to read it.

To check if this file was read, create a new file in the “admin/” folder named “info.php” with the following content:

```
<?php phpinfo(); ?>
```

Open the following URL in a new window of your preferred web browser "www.example.com/admin/info.php" and search for the "upload_max_size" and "post_max_size" settings. If they aren't set to 200Mb, it means that the server is ignoring the "php.ini" file. You need to contact your hosting tech support and ask them to increase the limits.

Q: Why do I get a "500: Internal Server Error" when I try to access the Administration Panel? (www.example.com/admin)

A: Some hosting servers don't allow the existence of the "php.ini" file (all the limitations must be increased by your hosting tech support). Simply remove the "admin/php.ini" file and try to reload the Administration Panel.

Q: Why none of the internal pages work (404)?

A: If the error page is a standard 404 page, it means that your hosting server doesn't support Apache "mod_rewrite" or you didn't upload the ".htaccess" file in the website's root directory (you might have uploaded the files without enabling the "View hidden files" option).

Q: What do I do when I find a bug?

A: First, go to your DevSaver account and check if you have all the updates installed. If so, please contact us using the support button next to your template. Please be aware we might need remote access (FTP and/or CMS login info) in order to identify the issue and fix it.

Q: How do I remove the DevSaver logo from the Administration Panel login page?

A: Open "admin/assets/templates/login.htm" file and remove the following code:

```
<div class="copyright">
<div class="col-xs-12 ar login-logo" >
<span>powered by &nbsp;&lt;/span>
<a href="https://devsaver.com" id="devsaver" target="_blank"></a>
</div>
<div class="clear"></div>
</div>
```

Q: How do I remove the DevSaver logo from the frontend footer?

A: Open "admin/modules/skineditor/copyright.htm" file and remove the following shortcode:

```
[developer]
```

Q: How do I receive email notifications when my website generates system errors?

A: Open "admin/lib/error/error.php" file and insert your email address in between the empty quotes at line 12:

```
define("ERROR_EMAIL" , "");
```

Every time your website will generate a system error you will receive an email with the full details. If you suspect the error is a bug from our side, or you simply need help, contact us at support@devsaver.com

Q: How do I deactivate the built-in CMS help (documentation)?

A: Go in "admin/modules/" folder and remove the entire "help" subfolder.

How to install updates / add-ons

Add-ons can be installed only in the product (domain) you selected during your purchase.

1. Go to your DevSaver Account and download a valid add-on for your product.
2. Click the "Tools" option in the CMS top menu, then select "Update Manager".
3. Upload the ".dvs" file, then click the "Next" button.
4. You'll be redirected in the "Logs" tab area after the successful installation.



Website: <https://devsaver.com>
Email: support@devsaver.com

Still didn't make it?
We can save you: [Open Ticket](#)